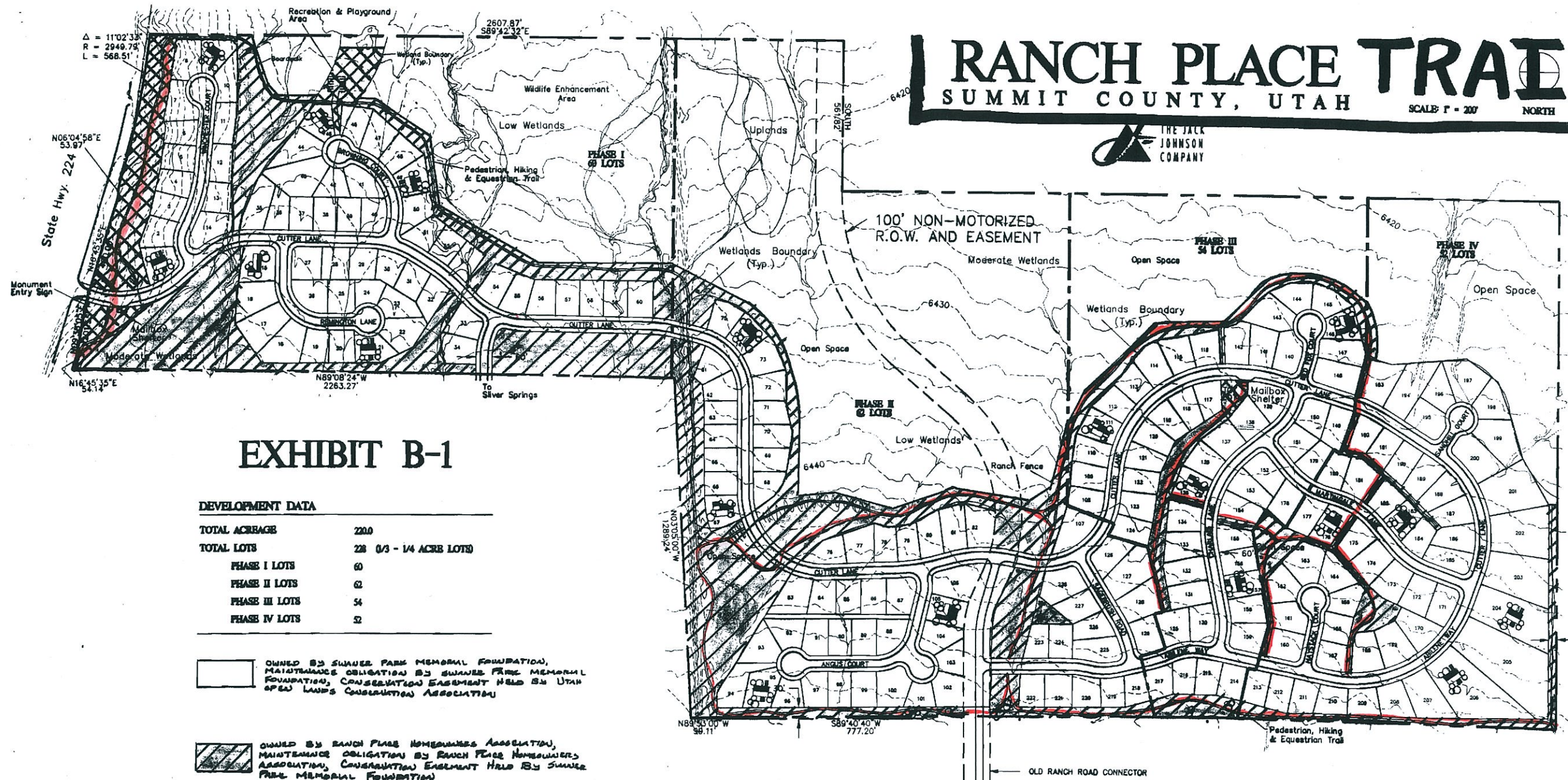


# RANCH PLACE TRAILS

SUMMIT COUNTY, UTAH






SCALE: 1" = 200' NORTH



## EXHIBIT B-1

**DEVELOPMENT DATA**

TOTAL ACREAGE	2200
TOTAL LOTS	226 (1/3 - 1/4 ACRE LOTS)
PHASE I LOTS	60
PHASE II LOTS	62
PHASE III LOTS	54
PHASE IV LOTS	52

-  OWNED BY SUMNER PARK MEMORIAL FOUNDATION, MAINTENANCE OBLIGATION BY SUMNER PARK MEMORIAL FOUNDATION, CONSERVATION EASEMENT HELD BY UTAH OPEN LANDS CONSERVATION ASSOCIATION
-  OWNED BY RANCH PLACE HOMEOWNERS ASSOCIATION, MAINTENANCE OBLIGATION BY RANCH PLACE HOMEOWNERS ASSOCIATION, CONSERVATION EASEMENT HELD BY SUMNER PARK MEMORIAL FOUNDATION
-  OWNED BY RANCH PLACE HOMEOWNERS ASSOCIATION, MAINTENANCE OBLIGATION BY RANCH PLACE HOMEOWNERS ASSOCIATION

Trail Distance: 16,205 ft.  
 3.07 miles  
 Trail Area: 1.49 acre